



# GigaVUE-420 Product Brief

Four - 10 GigE Ports

Twenty - 10/100/1000 Ports



## Features:

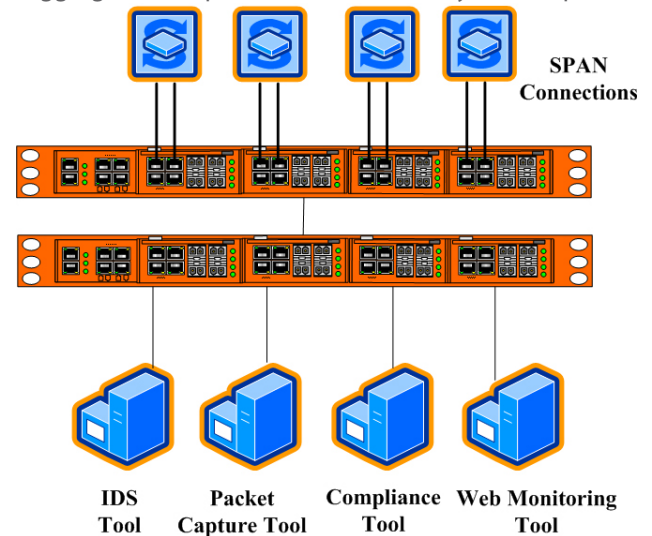
- Any-to-Any connectivity to solve tool deployment problems
- Aggregate multiple links to consolidate tools
- Intelligently filter and divide loads to customize and manage data to different tools
- Replicate traffic to multiple tools to share data sources
- Manage connections and filters with Citrus™ GUI
- Solutions for monitoring asynchronously routed Ethernet networks including 10 GigE
- Hardware based design for full line rate performance and near-zero latency

## Benefits:

- Immediate ROI by consolidating distributed tools and reducing management expense
- Affordable solution to 10 Gig monitoring
- Accurately measure time sensitive protocols and QoS
- Reduce packet loss to improve monitoring fidelity
- Support continuous monitoring and scalable growth with hot-swap modules
- Save rack space, cost, & complexity with optional integrated taps

## Applications:

- Isolate & capture sessions across parallel links & switches
- Share scarce span ports between multiple tools
- Reduce and customize data flow to each tool
- Divide large loads across multiple tools
- Monitor 10G links with legacy 1G or 10G tools
- Aggregate multiple links simultaneously to multiple tools



## Product Description

Gigamon delivers intelligent data access solutions to enhance network monitoring of data centers, service provider and enterprises.

The GigaVUE-420® Data Access Switch supports 10/100/1000 & 10Gig Ethernet. GigaVUE-420 aggregates, filters and replicates traffic flows across multiple security and monitoring tools. Hardware filters based on any pattern in the 128-byte header may be enabled to eliminate unwanted packets. The GigaVUE-420's modular design allows network managers to deploy the exact number of ports necessary to fit their requirements.

The GigaVUE-420 enables the DAN (Data Access Network) Unobtrusive to the production network, the GigaVUE-420 provides out-of-band ports for passive monitoring tools. Tools may be added without affecting the network at any hour without Configuration Management review. Multiple GigaVUE-420 systems can be stacked to create a 222 port DAN. All ports can be configured as network or tool ports.

### The GigaVUE-420 Family:

- GigaVUE-420 base chassis with redundant power & cooling
- GigaTAP dual fault-tolerant taps for copper or optical links
- GigaPORT copper or optical 4-port expansion module
- GigaLINK copper or optical 10 GigE port module